



TWO MARIDIEN

 High Street
SOUTH BLOCK

A woman with long dark hair, wearing sunglasses, a white sleeveless top, a blue beaded necklace, and large gold earrings, sits at a table. She is holding a blue and white patterned bag. A man in a blue and white striped shirt sits next to her, looking out of frame. The background is a blurred cafe interior with shelves and a counter.

LIFE IN A BRAND NEW LIGHT

 High Street
SOUTH BLOCK





THE HOME OF PASSIONATE MINDS

The blueprint for building dreams demands passion, commitment and innovation. Bonifacio Global City (BGC) is plugged into that same energy, continuously evolving it into the fastest-rising and most exciting central business district (CBD) and lifestyle destination in the country. It continues to astound with its mission of creating progressive and forward-thinking developments.



Ayala Land continues to shape the way people live, work and play in BGC.

A sprawling cosmopolis of retail and lifestyle destinations, commercial hubs, corporate headquarters, cultural and institutional centers, prime residences and a network of connected open spaces and parks, BGC has mastered the art of living by harmonizing a life of action and relaxation, dream building and inspiration.



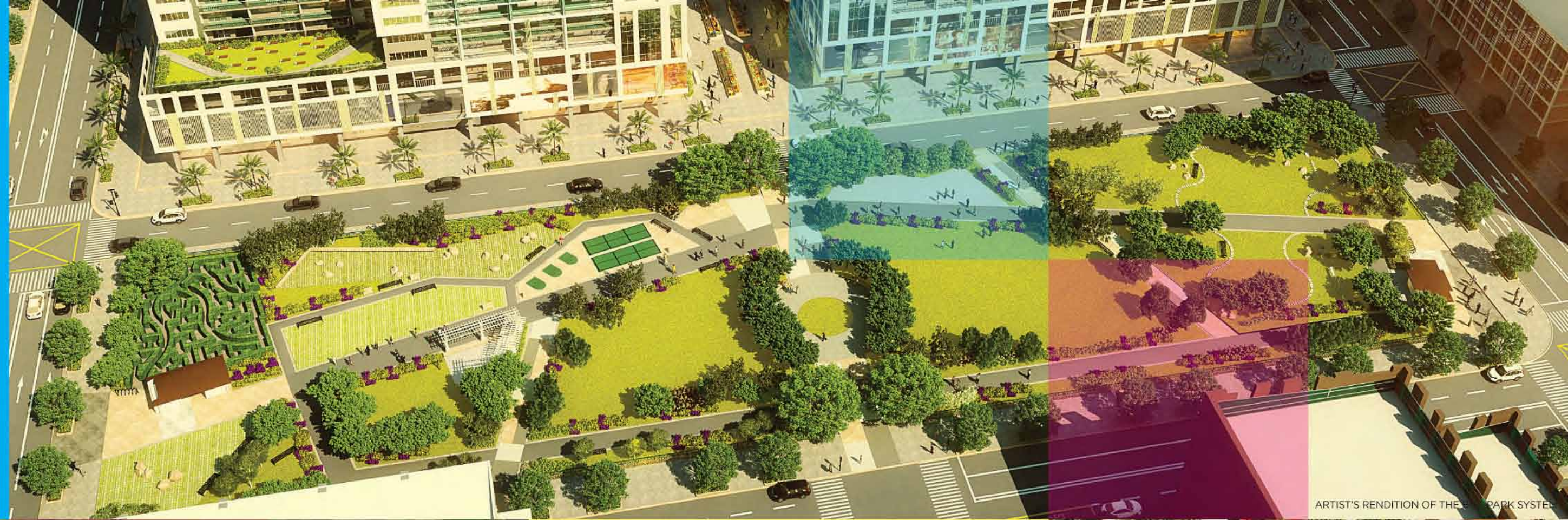
Taking its place at the heart of the Home of Passionate Minds, High Street South will soon become BGC's Cultural District. Looking forward to great times, BGC welcomes you to great company.

BGC Park System

Its unique streetscape grants you the chance to live, run, and relax among the city's brightest and most beautiful people.

Bonifacio High Street

With everything from mainstream mall boutiques to niche artisanal shops, experience a fresh and upscale multi-faceted shopping experience.



ARTIST'S RENDITION OF THE BGC PARK SYSTEM



ARTIST'S RENDITION OF BONIFACIO HIGH STREET

BGC comprises of the country's first world class science museum, public art and interactive sculptural elements that reconnect you to the country's rich history and culture, top corporations that offer great opportunities for vibrant careers, lush expansive parks where you can enjoy nature and open space right in the middle of the city, and a football field where you can keep an active lifestyle.

Everything is connected together with tree-lined pedestrian friendly streets that merge districts of work, play, and culture, so you can personalize your own vivacious well-rounded lifestyle that caters both necessity and desire.



LIFE

IN A BRAND
NEW LIGHT





Feel like a true citizen of the world as High Street South celebrates creativity and possibility.

Without boundaries to the imagination and Filipino ingenuity, High Street South stands proud to be BGC's Cultural District and future home to world-class talent.

Developed with the spirit of innovation of Alveo Land and fueled with the new urban vision heritage of Ayala Land, this synergy brings cosmopolitan living to new heights.



High standards of living enjoyed in first world countries are thoughtfully plotted into BGC's master plan, integrating beautifully designed infrastructure and landscape. This includes fostering a vibrant street life with more pedestrian paths, developing diverse residential options for a unique way of living, communing with nature through green and open spaces, and encouraging creativity and inspiration by proximity to cultural spaces.

TWICE AS BRILLIANT

You can have the best of both worlds: sweet serenity at home and vibrant community life right outside your door.



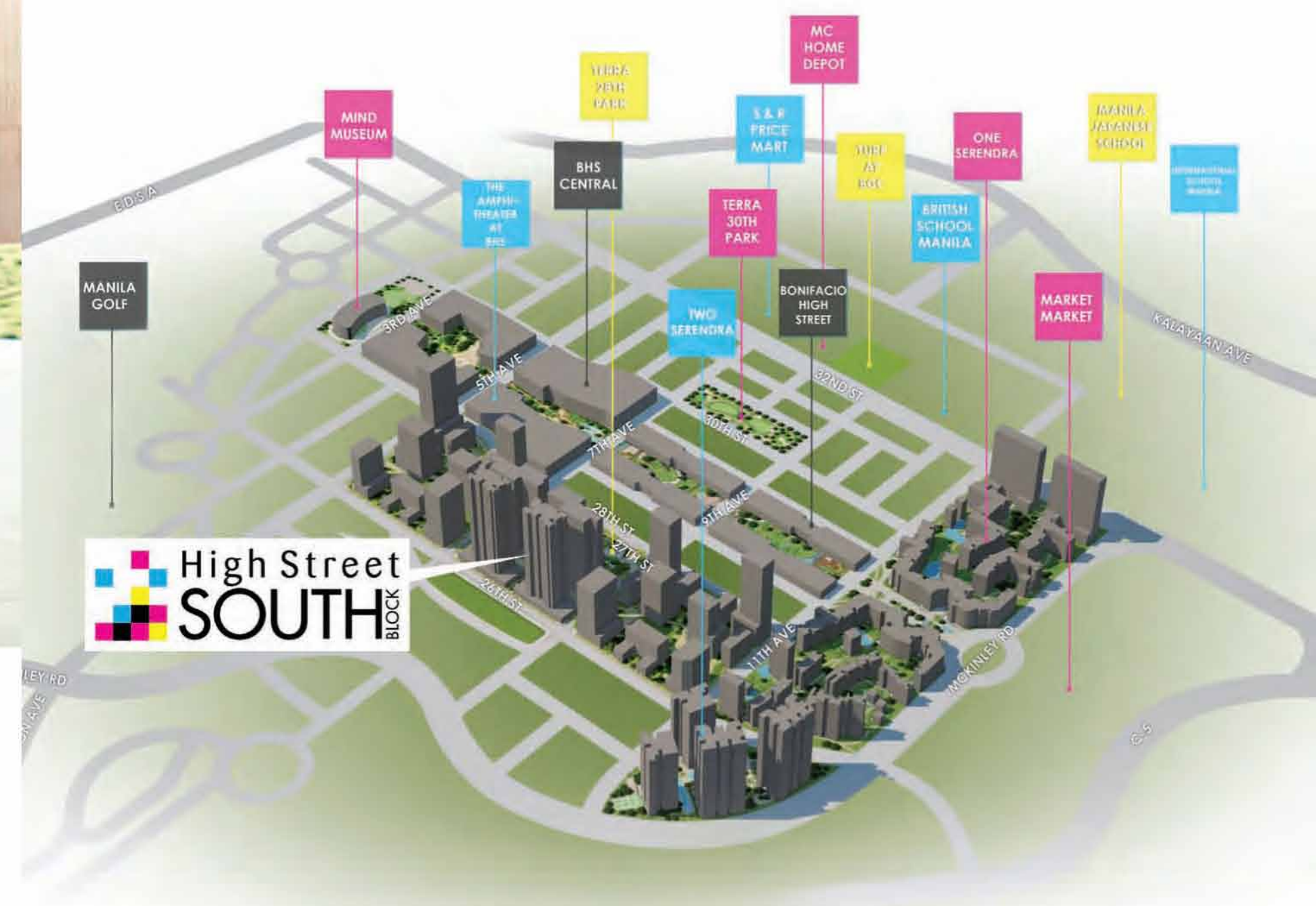
High Street South is planted at the heart of BGC, the prime spot of world class living. It is located directly south of Bonifacio High Street and west of Serendra. This frames High Street South as a natural extension to these lifestyle and residential destinations.

BUILD WEALTH

BGC City Center
Manila Central Business District
Ortigas Central Business District

CULTIVATE HEALTH

St. Luke's Medical Center
Makati Medical Center



THINK GLOBAL

International School of Manila
British School of Manila
Manila Japanese School
Enderun College
Asian Institute of Management (AIM)
Ateneo Graduate School of Business

FREE YOUR MIND

The Mind Museum
Arts in the City
Terra 28th Park
Track 30th Park
The Turf at BGC
The Amphitheatre
at Bonifacio High Street

SHOP THERAPY

Bonifacio High Street
Retail Promenade at High Street South
The Shops at Serendra
Market! Market!
The Fort Strip
Glorietta
Greenbelt



CREATIVE DUETS

High Street South is the brainchild of dreamers and builders. A collaboration of creativity and craftsmanship, it has trumpeted its greatest hits.



Mix Master

High Street South develops three blocks on eight parcels of land to create a world-renowned destination that weaves community and commercial areas. Thoughtfully zoned areas highlight distinct yet integrated features of the district.



High Street South

	Land Area	Uses
Block 17	12,658 sq.m.	One and Two Maridien with Retail Promenade
Block 18	18,030 sq.m.	Mixed-use, with high-end residential and office components
Block 15	16,730 sq.m.	Mixed-use, predominantly upscale and high-end residential with a mix of commercial and leisure components
Terra 28th Park	8,196 sq.m.	Completed park
Institutional Park	5,500 sq.m.	Current site of Arts in the City, future institutional and arts use
B17 Linear Park	2,261 sq.m.	Retail Promenade and Park connecting Block 17 to Terra 28th to Bonifacio High Street
B18 T-Park	8,503 sq.m.	Retail Promenade and Park
B15 T-Park	9,347 sq.m.	Retail Promenade and Park
Total	81,225 sq.m.	



Urban Art

Urban planning is understanding and providing the needs of the modern city dweller. It is crafting the physical landscape in which our lives thrive on.

Masterfully designed plazas pulse with action at the heart of the city. Modern and sleek buildings rise from brilliant concrete. Open parks fill with brightly colored kites flying overhead. Fields of green accentuated with bursts of flowering bouquets dot the landscape. Biking through pockets of the outdoors and group chatter, these all promise a great afternoon.



ARTIST'S RENDITION OF HIGH STREET SOUTH PLAZA

Graphic Wonders

Towers rise with an evolving façade to highlight the city's diversity while staying anchored in a unified aesthetic. High-rise buildings of different uses, with a mix of lifestyle retail areas and parks, commercial headquarters, and leisure destinations, amidst a predominantly residential cityscape of studios, 1 to 3-bedroom apartments, penthouse units and urban villas, all present diverse ways for you to enjoy your distinct lifestyle.



ARTIST'S RENDITION OF HIGH STREET SOUTH RETAIL AREA

Bright Lights

The district remains alive from sun up to sun down to make sure everything you need is within arms length. Filled with gorgeous boutiques, department stores, cafes, restaurants and markets, its vibrant energy lights up every corner.

TWIN PRIMES

TWO MARIDIEN AT HIGH STREET SOUTH



Two Maridien presents a rare opportunity for you to make the best out of your city life. As the second tower in High Street South, it continues to feature prime qualities of residential living. Soul-satisfying spaces that bring in natural light and wide views create a place that bolsters your creativity.

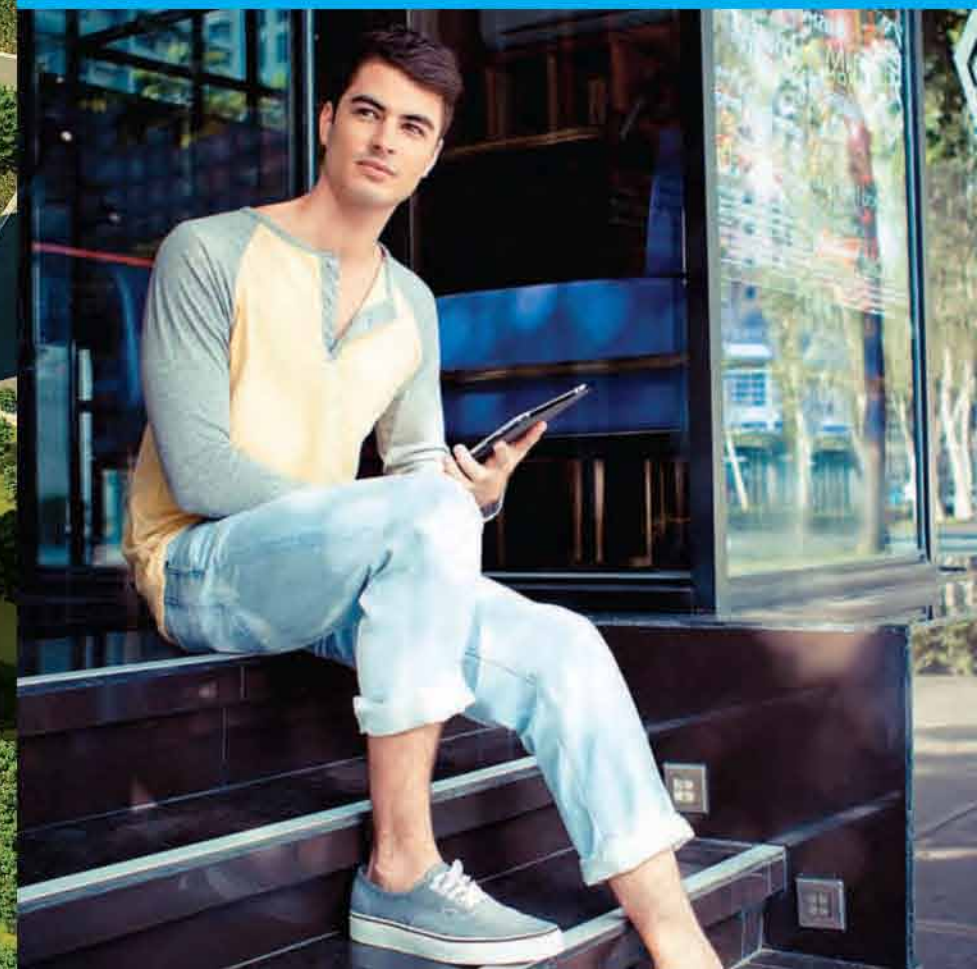


An aerial architectural rendering of the High Street South development. The image shows a dense cluster of modern high-rise buildings with glass and concrete facades, interspersed with green spaces, trees, and pedestrian walkways. The layout includes a central block of tall towers and lower-rise commercial buildings along the streets. A callout box in the top left corner highlights the 'High Street SOUTH BLOCK TWO MARIDIEN' area.

High Street SOUTH BLOCK TWO MARIDIEN

FRONT AND CENTER

One and Two Maridien are located at the center of action. The buildings are located at the central block of High Street South with direct views of two prominent parks at the heart of BGC. The main park is created for families and children to explore their creativity. It is surrounded by galleries, theaters, dance halls, music lounges and jazz clubs - an area of inspiration for the culturally-inclined.





LIVING LARGE

Feel at home as a global citizen and be happily surprised to find the world right at your doorstep. The Maridien's amenities complement the lifestyle of its well-travelled residents.



ARTIST'S RENDITION OF THE POOL AMENITY



Outdoor amenities present progressive designs in modernity and prestige to maximize views of the surrounding retail strips and linear parks.

Lounge bar
Lifestyle pools

- Leisure pool
- 25m lap pool with infinity edge
- Kiddie pool

Social Deck
Bridge with view deck
(connecting One and Two Maridien)

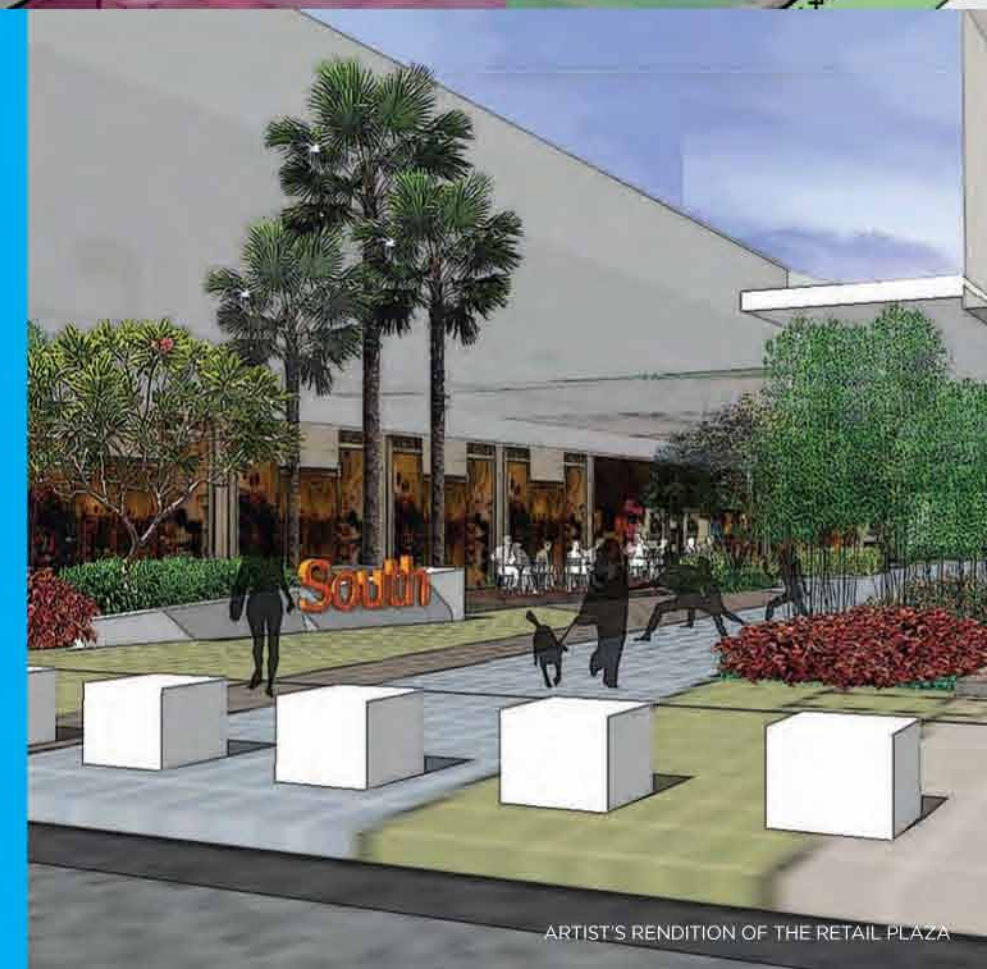


ARTIST'S RENDITION OF THE POOL AMENITY



Indoor amenities are crafted with cutting edge modern standards. Sleek and beautiful, it caters to the needs of the contemporary urban resident.

Ground and second level retail plaza
with al fresco spill-over areas
Main lobby with parcel corridor
Fitness areas
Male and Female locker/shower rooms



ARTIST'S RENDITION OF THE RETAIL PLAZA



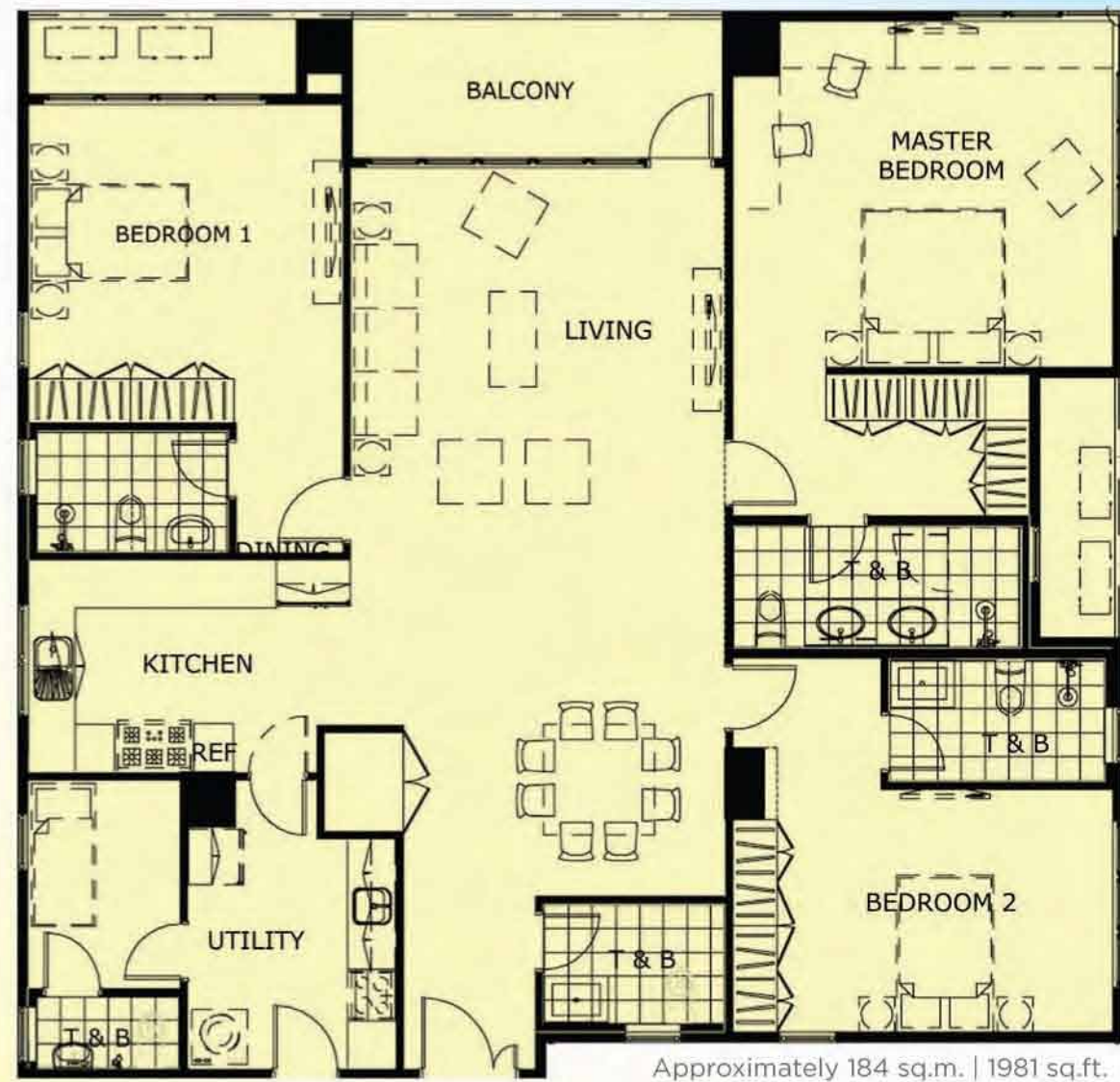
PROMENADE LOVE

Retail strips where you can just kick back, relax and be yourself. Small boutiques and cafes create a chill and relaxing atmosphere away from the big crowds. Comfort is having home just a few steps away.

Street South

TOP SPOTS

URBAN VILLAS AT HIGH STREET SOUTH



Space is redefined in High Street South. Urban Villas in Two Maridien allow for up-close views of the surrounding parks and vibrant retail and lifestyle areas.





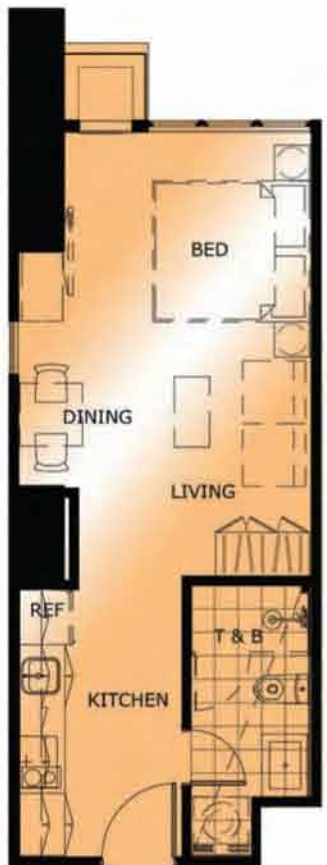
GREAT SPACES

Dream up your own space that's ready to be designed to your life's vision.

From studios to 3-bedroom apartments, urban villas and penthouse units, Two Maridien fulfils your need for creative solitude, coffee or tea time with a friend, or even fun nights out with your favorite people.

These spaces celebrate the kind of lifestyle you deserve.

STUDIO UNIT
For those of us who live best within the proximity of our places of work and play, Two Maridien will offer the perfect setup for artists and professionals on the move.

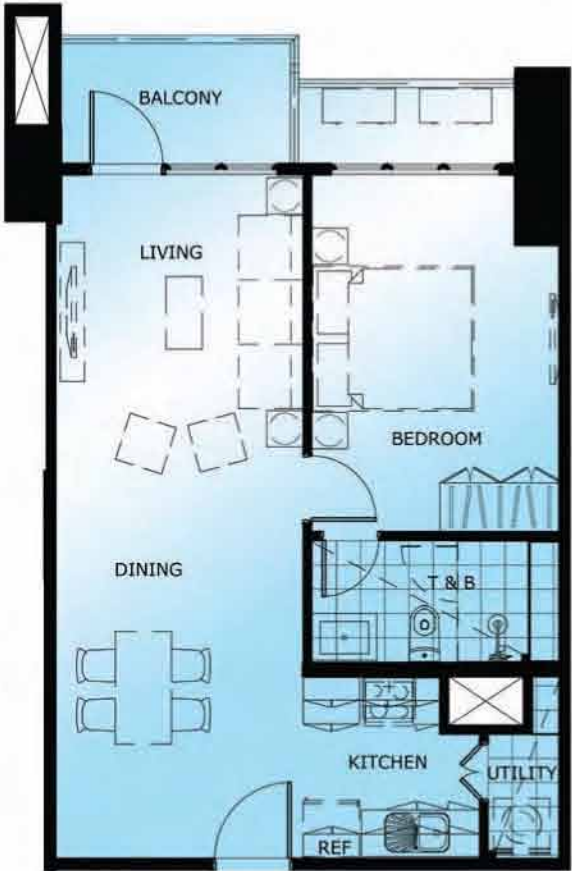


Approximately 36-37 sq.m. | 388-398 sq.ft.

	sq.m.	sq.ft.
Living/Dining	30	323
Masters T&B	6	65
Total	36	388

ONE-BEDROOM UNIT

To those of us who take life on our terms – the undisturbed solace of time spent alone, or a cocktail party held at our place – Two Maridien’s one-bedroom units will provide the ultimate getaway for the tastemakers of today.



Approximately 64-82 sq.m. | 689-883 sq.ft.

	sq.m.	sq.ft.
Living/Dining	28	299
Kitchen	5	56
Masters Bedroom	15	159.5
Masters T&B	5.50	57.5
Utility Room	2	24
Balcony & ACCU	8.50	89
Total	64	685

TWO-BEDROOM UNIT

Families and gracious couples will find all the comfort and space they crave in Two Maridien’s two-bedroom units.



Approximately 97-115 sq.m. | 1,004-1,238 sq.ft.

	sq.m.	sq.ft.
Living/Dining	36	387
Kitchen	7.25	78
Masters Bedroom	15.25	164
Masters T&B	5	54
Bedroom 1	11	119
Common T&B	3.50	37
Utility Room	7	78
ACCU	5	53
Balcony	7	74
Total	97	1,044

THREE-BEDROOM UNIT

Friends will find the ultimate flat to fashion into their home base among Two Maridien's three-bedroom units. Generous spaces with careful incorporation of natural light will give you a sense of privacy and space when you want it, while allowing the indoors to spill out onto the balcony with the perfect venue to chill alone or even host a party.



Approximately 128-161 sq.m. | 1,378-1,733 sq.ft.



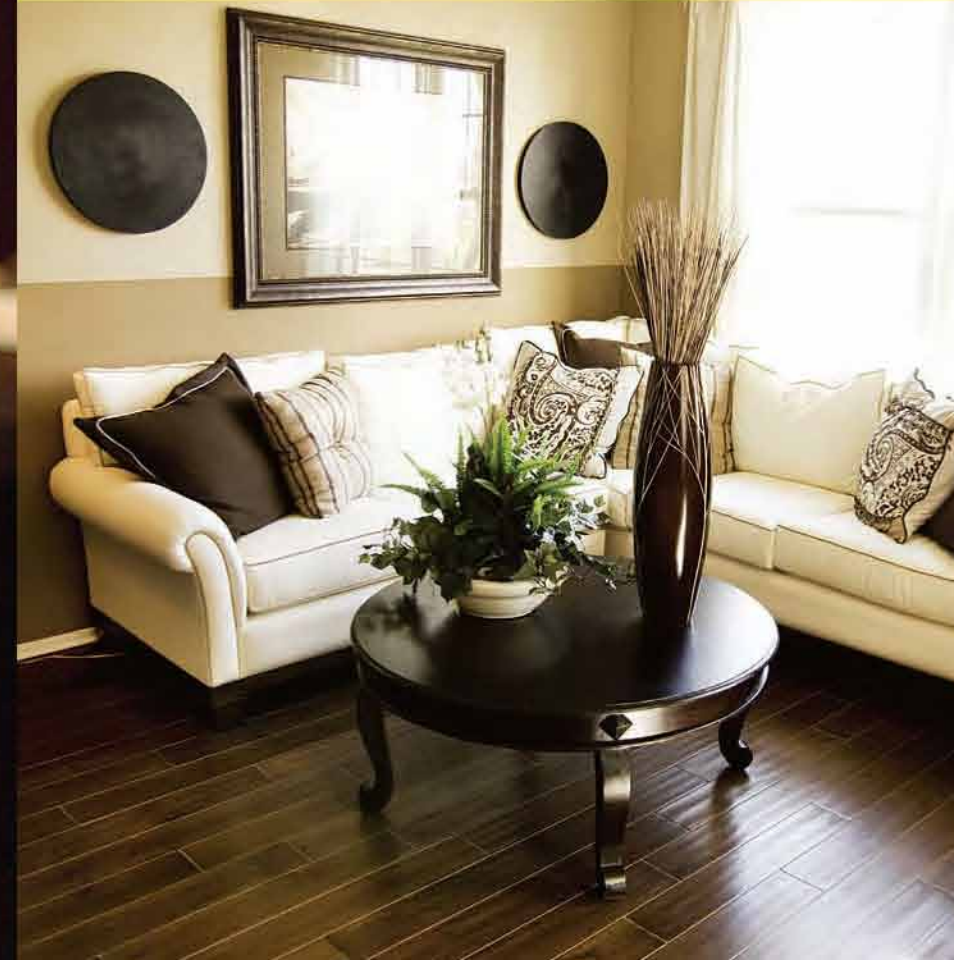
	sq.m.	sq.ft.
Living/Dining	40	429
Kitchen	8.50	91.50
Masters Bedroom	17	180.50
Masters WIC	5	58
Masters T&B	5.50	60
Bedroom 1	16	174
Bedroom 2	15	160

	sq.m.	sq.ft.
Common T&B	3	36
Utility/Maid's Room	7	72.50
Maid's T&B	2	16.50
ACCU	3	34
Balcony	6	66
Total	128	1,378



PERFECT PARTNER

Bolstered by the quality of service offered by the Ayala Property Management Corporation, the distinct and vibrantly modern lifestyle at The Maridien is both possible and exceptional.



With Ayala Land's name as the forerunner of providing the country with prime residential developments, only the highest standard of property maintenance will be guaranteed at High Street South.





Innovating the way you live

ALVEO
an AyalaLand company

www.alveoland.com.ph

NO REPRESENTATION IS BEING MADE HEREIN. THE PARTICULARS, DETAILS AND VISUALS SHOWN HEREIN ARE ONLY INTENDED TO GIVE A GENERAL IDEA OF THE PROJECT AND AS SUCH ARE NOT TO BE RELIED UPON AS STATEMENTS OF FACT. WHILE SUCH PARTICULARS AND DETAILS ARE BASED ON PRESENT PLANS WHICH HAVE BEEN PREPARED WITH UTMOST CARE AND ARE GIVEN IN GOOD FAITH, INTERESTED PARTIES ARE ENJOINED TO VERIFY THEIR FACTUAL CORRECTNESS AND SUBSEQUENT CHANGES, IF ANY, THE CONTENTS HEREIN ARE SUBJECT TO CHANGE WITHOUT PRIOR NOTICE AND DO NOT CONSTITUTE PART OF AN OFFER OR CONTRACT. DETAILS MAY BE SUBJECT TO CHANGE DEPENDING ON ACTUAL CONDITIONS AT SITE DURING CONSTRUCTION. ALVEO LAND DOES NOT WARRANT OR ASSUME ANY LEGAL LIABILITY OR RESPONSIBILITY FOR THE INFORMATION AND PARTICULARS PRESENTED HEREIN. FURTHER, NO COMMITMENT OR UNDERTAKING IS BEING MADE IN THE PRESENTATION OF THIS MATERIAL. ANY REPRODUCTION, REPLICATION, DUPLICATION, PHOTOGRAPHY OR COPYING OF THIS MATERIAL OR ANY INFORMATION OR DETAIL PROVIDED HEREIN, WHETHER IN WHOLE OR IN PART, AND IN ANY FORM OR MANNER WHATSOEVER, IS STRICTLY PROHIBITED AND SHALL BE DEALT WITH IN ACCORDANCE WITH LAW. HLURB LTS NO. ENCRFO-12-06-027 Rufino Hermann S. Gutierrez PRC - REBL NO. 0004771



BLOCK PARTY

THE COUNTRY'S MOVERS, SHAKERS, DREAM-MAKERS, INNOVATORS, ARTISTS, ENTREPRENEURS, PASSION-SEEKERS.

ACQUAINT YOURSELF WITH THESE GLOBAL CITIZENS.



LAUREN

model / student



HUGO
photographer



EMILY
fashion editor



JACK
art director



BONIFACIO GLOBAL CITY'S CULTURAL DISTRICT